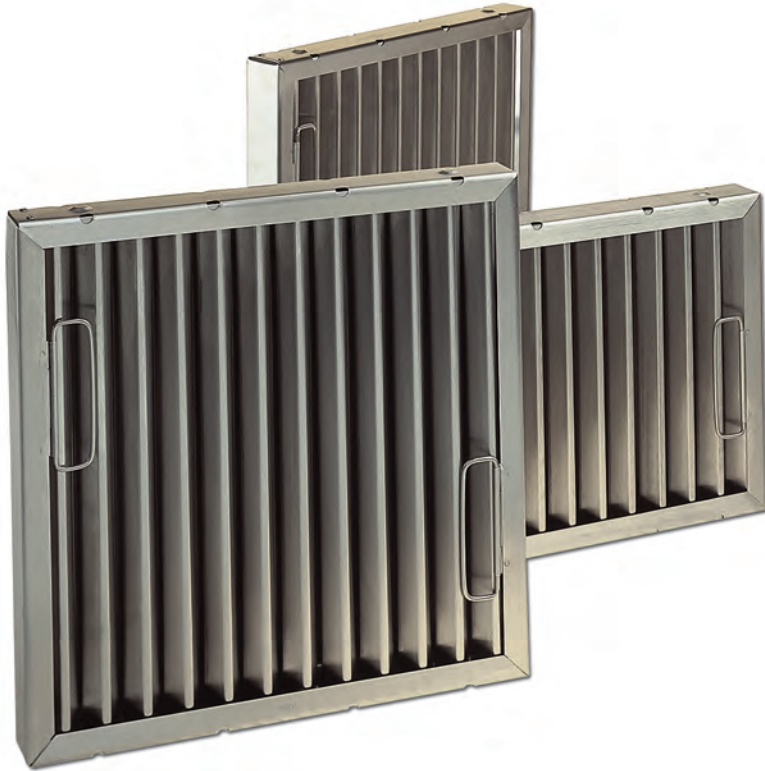


FLAME GARD—TYPE II



STAINLESS STEEL GREASE FILTERS

DUAL ACTION GREASE FILTER FEATURES:

ACTION ONE provides positive flame barrier protection. Its stainless steel interlocking baffle walls make it the most effective flame barrier of all filters marketed today.

ACTION TWO provides unsurpassed performance in efficient grease removal. The aerodynamic twin-wall "V" baffles continuously separate grease and air. Stainless steel surfaces assure constant run-off and allow grease to be safely deposited in collection troughs.



TYPE II-STAINLESS STEEL GREASE FILTERS

- SAFEST BAFFLE FILTER AVAILABLE
- PROVIDES POSITIVE FLAME BARRIER PROTECTION
- HEAVY DUTY SOLID STAINLESS STEEL WELDED CONSTRUCTION
- STURDY DROP HANDLES PROVIDED
- POLISHED VANES PROVIDE SELF-DRAINING GREASE RUN OFF
- HIGHLY EFFICIENT IN GREASE REMOVAL
- PATENTED VANE DESIGN PREVENTS GREASE FROM DRIPPING -FOOD, UTENSILS AND BURNER SURFACES REMAIN CLEAN
- RUGGED, WELDED STAINLESS STEEL CONSTRUCTION OFFERS EASY CLEANABILITY, CAN WITHSTAND TODAY'S HARSH CLEANING SOLUTIONS, AND FITS IN STANDARD SIZE DISHWASHER
- ECONOMICAL...NEVER NEEDS REPLACING
- RECOMMENDED BY LEADING CONSULTANTS AND DESIGNERS
- MEETS REQUIREMENTS OF NATIONAL FIRE PROTECTION ASSOCIATION BULLETIN #96
- TESTED AND CLASSIFIED BY UNDERWRITERS LABORATORIES, INC. FILE #R10173

FILTERS WITH LOCKING HANDLES

ARE AVAILABLE TO COMPLY WITH MARYLAND, VIRGINIA AND WASHINGTON D.C. SPECIFICATIONS FOR COMMERCIAL HOODS.
TO ORDER STATE SIZE WITH SUFFIX-MH

***LOCKING HANDLES ARE ONLY AVAILABLE UPON APPLICATION**

TYPE II-SERIES STAINLESS STEEL FILTERS W/DROP HANDLES (STANDARD)

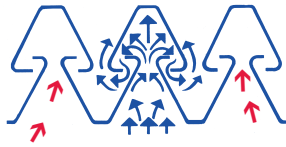
SIZE	CHG MODEL #	STANDARD-KEIL #	WGT. (LBS/KG)
10 x 16 (254 x 406mm)	201016	2610-1016-1251	5-1/2 (2.49kg)
10 x 20 (254 x 508)	201020	2610-1020-1251	6 (2.72kg)
12 x 16 (305 x 406mm)	201216	2610-1216-1251	6-1/2 (2.95kg)
12 x 20 (305mm x 508mm)	201220	2610-1220-1251	7 (3.17kg)
16 X 16 (406mm x 406mm)	201616	2610-1616-1251	8 (3.63kg)
16 x 20 (406mm x 508mm)	201620	2610-1620-1251	8-1/2 (3.85kg)
16 x 25 (406mm x 635mm)	201625	2610-2020-1251	10-1/2 (4.76kg)
20 x 16 (508mm x 406mm)	202016	2610-2520-1251	6-1/2 (2.95kg)
20 x 20 (508mm x 508mm)	202020	2610-2020-1251	10-1/4 (4.65kg)
20 x 25 (508mm x 635mm)	202025	2610-2025-1251	12 (5.44kg)
25 x 16 (635mm x 406mm)	202516	2610-2516-1251	11-1/2 (5.21kg)
25 x 20 (635mm x 508mm)	202520	2610-2520-1251	12 (5.44kg)

NOTE: ACTUAL FILTER THICKNESS IS 1-7/8" (47.6mm)

FLAME GARD-TYPE II

OPERATION

Grease laden air is drawn into the filter by the exhaust fans. As the air starts through the aerodynamic "V" baffle system, it undergoes a series of compressions, expansions and pressure changes. The heavy grease is deposited safely and quickly on the baffles while the grease-free air passes through the filter and up the exhaust duct. The baffle's smooth surface enables the collected grease to run off into collection troughs without dripping on food, utensils or burner surfaces. The CHG Grease filter method of separating grease and air has achieved superior levels for efficiency and safety not attained by competitor's filters.



SELF-BALANCING

With conventional mesh filters, it is necessary to pull two to five times as much air through the center filter to get good smoke and grease vapor capture on the ends of a hood. This is a needless waste of costly heated or air conditioned air. CHG grease filters are aerodynamically designed to provide a self-balancing air flow throughout the entire length of a hood. Actual field tests have repeatedly shown a variation of less than $\pm 10^\circ$ air flow from end to end. This unique design assures good capture through the entire hood length, with 25 to 50% less volume of exhaust air.



CONVENTIONAL MESH AIR FLOW



SELF-BALANCING AIR FLOW

CONSTRUCTION

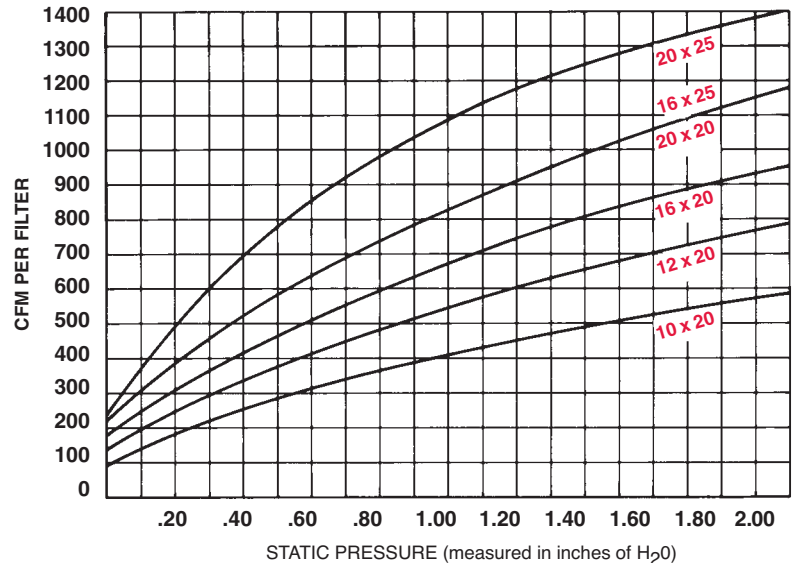
CHG stainless steel grease filters are constructed of heavy duty Type 304 stainless steel, providing the most durable filter available in today's market, and will provide years of trouble-free operation. There are no coatings to wear out and no involved mechanisms which can jam.

All stainless steel grease filters are guaranteed against defects in workmanship or materials.

MAINTENANCE

The all-stainless steel construction allows the filter to be soaked, sprayed or placed in a dishwasher for simplified cleaning, without concern for rusting or wearing out of surface coatings.

AIR FLOW CHARACTERISTICS



STATIC PRESSURE

CFM per Filter	10 x 20	12 x 20	16 x 20	16 x 25 20 x 20	25 x 20
150	.12	.02			
175	.18	.06			
200	.25	.11	.03		
225	.31	.16	.07		
250	.38	.21	.11	.03	
275	.46	.26	.15	.06	.03
300	.55	.31	.18	.09	.04
325	.63	.37	.23	.12	.06
350	.72	.43	.27	.15	.08
375	.84	.50	.32	.18	.10
400	.95	.56	.37	.22	.12
425	1.06	.62	.42	.25	.14
450	1.17	.70	.47	.28	.16
475	1.32	.77	.52	.32	.18
500	1.45	.85	.57	.36	.21
525	1.60	.92	.62	.40	.23
550	1.75	1.01	.66	.44	.25
575	1.90	1.10	.75	.48	.27
600		1.18	.81	.52	.30
625		1.27	.87	.57	.32
650		1.37	.93	.62	.35
675		1.47	1.01	.67	.37
700		1.58	1.07	.72	.41
725		1.70	1.14	.77	.43
750		1.81	1.22	.82	.46
775		1.95	1.30	.88	.49
800			1.37	.93	.53
825			1.46	1.00	.56
850			1.55	1.06	.60
875			1.65	1.12	.63
900			1.75	1.17	.67
925			1.87	1.23	.71

EFFECTIVE AREA CHART

NOMINAL L x W x T	EFFECTIVE AREA Square Feet
----------------------	-------------------------------

10 x 20 x 2	1.00
12 x 20 x 2	1.25
16 x 20 x 2	1.75
16 x 25 x 2	2.24
20 x 20 x 2	2.25
20 x 25 x 2	2.88

COMPONENT HARDWARE GROUP, INC. Grease filter classification by Underwriters' Laboratories, Inc., as to flammability only after exposure to grease-laden air. See U.L. Classified Building Material Index. File #R10173

ALL CHG STAINLESS STEEL GREASE FILTERS ARE: Classified by Underwriters' Laboratories Inc.-File #R10173.